

The Periodic Table of You

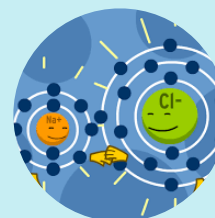
How do your experiences shape who you are?

Periodic Table of Life															
1 Ai air	8 Cr compromise											55 Og originality	62 Re realism		
2 Ar art	9 Cn confidence	15 Dt determination	What is life to you?										49 Mt motivation	56 Pa patience	63 Rf reflection
3 Be belief	10 Cu courage	16 Dn DNA											50 Mu music	57 Pe peace	64 Rj rejection
4 Bi birth	11 Ce creativity	17 Ed education	21 Et ethic	25 Fc fiction	29 Ge generosity	33 Ho hope	37 It intuition	41 Lk like	45 Ma math	51 Ne negativity	58 Ph philosophy	65 Re religion			
5 Co communication	12 Ca creatures	18 Em empathy	22 Fa fact	26 Fo food	30 Go goodwill	34 Im imagination	38 Jo joy	42 Lt listen	46 Mi miracle	52 Op opposition	59 Pl plants	66 Rs responsibility			
6 Cm community	13 De death	19 En enemy	23 Fi failure	27 Fr forgiveness	31 Ha hate	35 In independence	39 Le learn	43 Lr literature	47 Ms mistake	53 Ot optimism	60 Po positivity	67 Ri risk			
7 Cp competence	14 Ds desire	20 Ee energy	24 Fm family	28 Fe friendship	32 Hi history	36 Is inspiration	40 Li liability	44 Lo love	48 Mo moral	54 Or organization	61 Pu purpose	68 Sc science			
69 Se senses	71 So society	73 Sr sorrow	75 Sy sympathy	77 Te teach	79 Th thinking	81 To tolerance	83 Un uncertainty	85 Uk unknown	87 Wi wisdom						
70 Sh shelter	72 Ss solar system	74 Su sustainability	76 Sy system	78 Tc technology	80 Ti time	82 Tr trust	84 Ud understanding	86 Wa water	88 Wo world						



Unit 2.B

The Periodic Table & Trends



Unit 3

Chemical Bonding

Project Overview:

You will create a periodic table that shows how different aspects of your life change over the course of five (time) periods: child, high school student, college student, adult, and elder.

You will then analyze these different experiences and preferences and determine how they have influenced your identity.

1

**PERIODIC TABLE
DESIGN**

Due: Friday, Nov. 6

2

**FINAL PERIODIC
TABLE**

Due: Thursday/Friday,
Nov. 12/13

3

**IDENTITY ANALYSIS
BROCHURE**

Due: Monday/Tuesday,
Nov. 16/17

Project Requirements

Periodic Table

As discussed in our previous brainstorm, your table will show how **at least FIVE group/families** of your life change over the course of five different (time) periods: Child, High School Student, College Student, Adult, and Elder.

Possible Groups/Families:

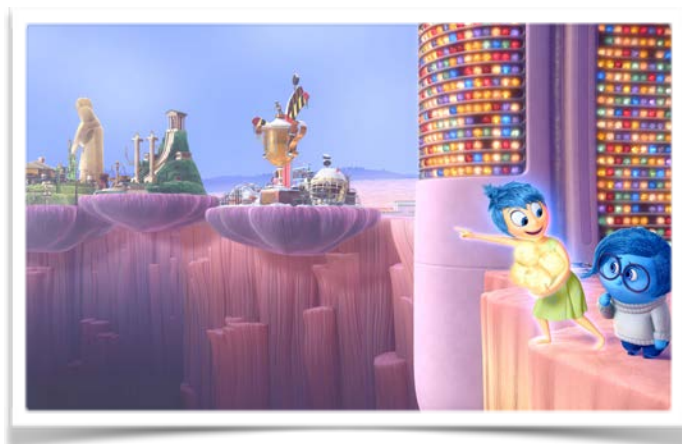
- Home (Where do you feel safest/most comfortable?)
- Hero (Who do you look up to?)
- Success (What was your greatest achievement?)
- Challenge (What was a significant challenge?)
- Favorite Hobby
- Favorite Food
- Favorite Memory
- Other (What else characterized this time period for you?)

You may choose to personalize your table as you wish. However, each panel should contain a **drawing** and **label**. Do not feel limited to a two-dimensional poster. Think big! Regardless, your end result should be roughly 11" x 17".

Deliverable Must-Haves:

Periodic Table with:

- **at least** five groups families and five (time) periods
- accompanying **drawing** and **label** for each panel



Identity Analysis Brochure

Focus on **at least six** of your panels and look at their characteristics. Based on these characteristics, what chemical elements would best represent them? Think about their charge, reactivity, uses, etc.

Next, looking at your panels, how have some of them bonded together to create aspects of your identity (think *Inside Out*)? Identify **at least two** “molecules” of your identity that have formed from this bonding. Identify the type of bond and characteristics associated with this new molecule.

Deliverable Must-Haves:

Brochure showcasing:

- **six** of your panels & their chemical characteristics (with rationale)
- **two** “molecules” of your identity, what “elements” they are made up of, the type of bond, and their characteristics

NEED AN EXTRA CHALLENGE? TRY ADDING THESE TO YOUR IDENTITY ANALYSIS BROCHURE

Looking at your periodic table, are there any trends that you notice?

If you could write a nuclear decay equation representing your life, what would it be?